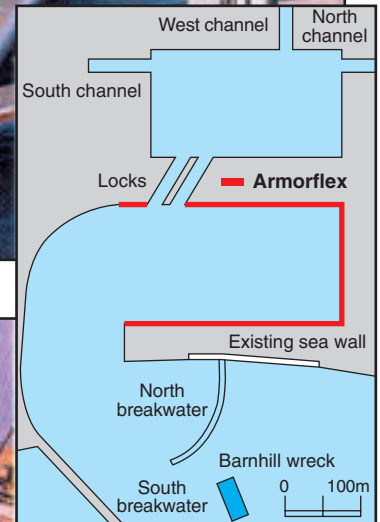


Project Report

Library No.		
4	2	35

- Project:** Sovereign Harbour, Eastbourne, Sussex
- Client:** Tarmac Construction Limited
- Consultant:** Ove Arup & Partners
- Consultants:** Kier Construction Limited (Design & Build contract)
- Products:** Almost 10,000m² of Armorflex 140 Flexible Concrete Revetment System
- Date:** Summer 1992

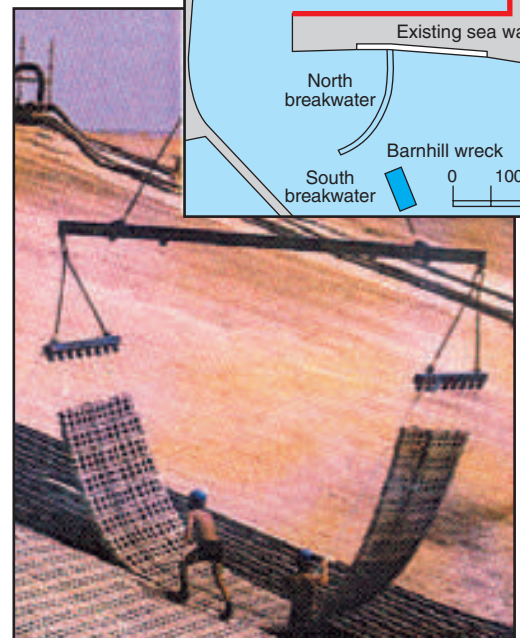


Introduction

Sovereign Harbour is a £40m development transforming 14ha. of old gravel pits into an outer tidal harbour with locks into a constant depth inner harbour. The complete facility provides berths for 650 craft, a hotel, various leisure and retail outlets, together with a prestigious housing development.

Construction

Excavation for the outer harbour involved the removal of 400,000m³ of material. The west facing gradients of the outer harbour were constructed with an artificial beach slope of 10% to dissipate wave energy entering in through the breakwater. The other three sides, which provide berthing facilities for various kinds of leisure boats, have a steeper 33% slope. These slopes which are within the basin are protected using a geotextile filter over which Armorflex precast concrete revetment blocks have been laid.



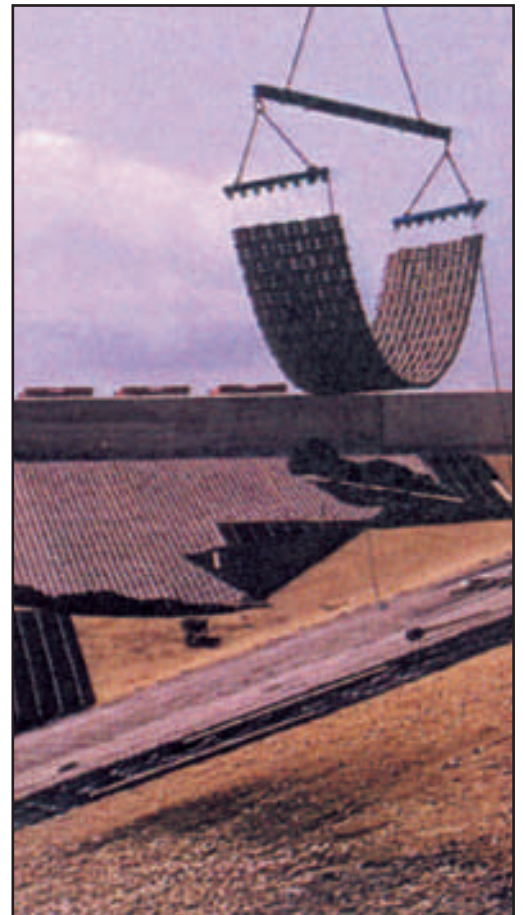
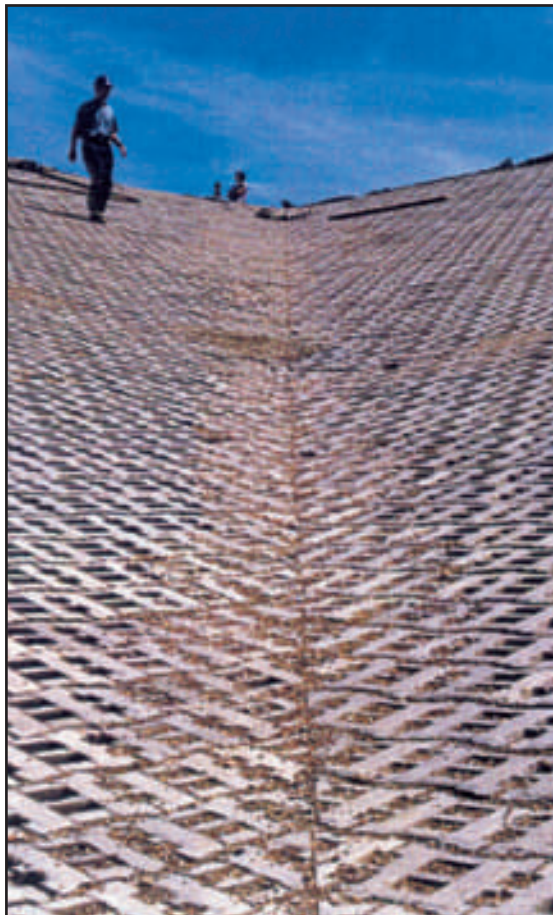
Project Report

Installation

Over 700 mats were delivered to site keeping pace with daily installation targets. Kier Construction anticipated a single team to lay the revetment at a rate of about 3,000m² (210 mats) a week. Once the mats were installed the interstices between the blocks were filled with 5-20mm of angular aggregate to interlock the blocks. At the top of each slope is a reinforced concrete wall to contain the water.

Conclusion

This major phase of the operation was completed in the Autumn of 1992 and was opened the following Spring. A new phase of development is planned.



Concrete Products (Lincoln) 1980 Ltd
Skellingthorpe Road, Saxilby, Lincoln LN1 2LR
T: 01522 703681
F: 01522 704233
E: info@armortec.co.uk
W: www.armortec.co.uk